



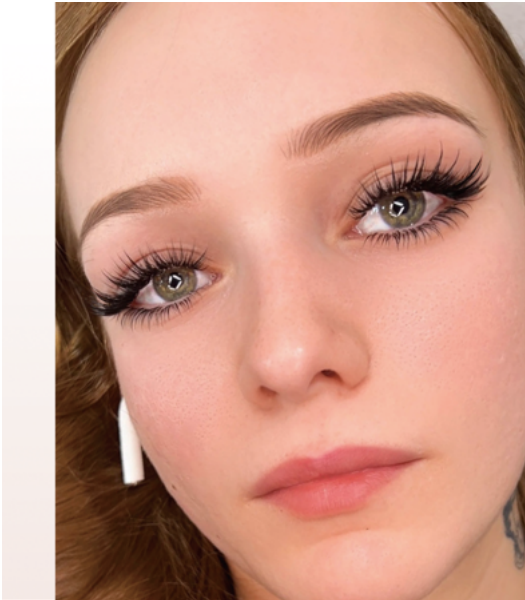
### Fairy Style Design Description



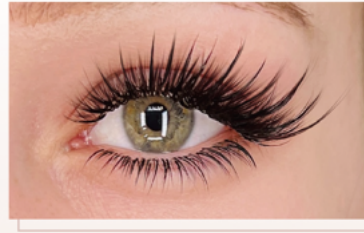
**Key Features:**

1. Evenly Spaced Spike Placement – Precisely positioned spikes create a structured and defined lash effect.
2. Layered & Dimensional Look – Alternating short and long lashes add depth and texture.
3. Clean & Polished Finish – The Spike technique ensures a sleek, well-organized lash pattern.
4. Bright & Eye-Opening Effect – Spikes enhance eye definition, making the eyes appear larger and more captivating.
5. Feather-Light Materials – Uses ultra-light fibers, ensuring fullness without weighing down natural lashes.
6. Balanced Between Bold & Natural – Dramatic yet soft, suitable for various occasions.
7. Long-Lasting & Comfortable – Secure application and lightweight fibers provide all-day wearability.
8. Perfect for Special Events – Ideal for dates, parties, photoshoots, and glamorous makeup looks.

The Fairy Lash Style combines structured spikes with soft, natural layers, delivering a bold, eye-catching, and well-defined lash enhancement.



### Wet Style Design Description



**Key Features**

1. Moist, Glossy Effect – Mimics the fresh mascara look with a sleek, radiant finish.
2. Bundle Arrangement – Lashes are applied in small clusters for a clean and defined look.
3. Mixed-Length Design – Varying lash lengths (e.g., 8mm, 10mm, 12mm) create a natural, layered effect.
4. Lightweight & Comfortable – Uses ultra-fine fibers (0.03mm or 0.05mm) for a soft, weightless feel.
5. Trendy Yet Natural – Perfect balance between fashion-forward and wearable for daily or special occasions.
6. Customizable – Curvature, length, and density tailored to each client's eye shape and style.
7. Long-Lasting & Low Maintenance – Stays fresh for weeks with minimal upkeep.

The Wet Style lash extension delivers a chic, effortless, and eye-catching look.



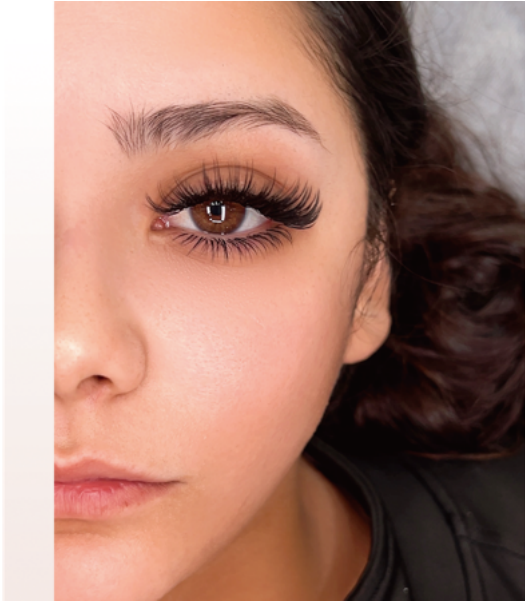
### Fringe Style Design Description



**Key Features:**

- Airy & Natural Look – Mimics natural lash growth for a fresh, effortless appearance.
- Layered Dimension – Alternating lengths and thicknesses add depth and structure.
- Soft & Lightweight – Fine fibers ensure a comfortable, weightless feel.
- Precision Application – Aligns seamlessly with natural lashes for a flawless finish.

Fringe Style creates a light, elegant, and naturally voluminous lash look, perfect for enhancing beauty with a modern, sophisticated touch.



### Wispy volume Style Design Description



**Key Features:**

1. Blend of Lash Flow & Volume – Combines natural wispy texture with Volume fullness for a soft yet dense effect.
2. Layered & Dimensional Effect – Alternating short and long lashes create a natural, multi-dimensional look.
3. Volume Fan Technique – Uses handmade lash fans, enhancing fullness while keeping the lashes airy.
4. Ultra-Lightweight Fibers – Made with 0.03mm or 0.05mm fibers, ensuring a dense yet lightweight feel.
5. Gradual Length Transition – Lashes are applied in varied lengths for a seamless natural blend.
6. Balanced & Fluffy Placement – Fans are evenly spaced without a rigid pattern, giving a soft and effortless wispy effect.
7. Comfortable & Long-Lasting – Designed for all-day wear, providing a voluminous yet lightweight feel.
8. Versatile for All Occasions – Suitable for daily wear, work, and elegant makeup styles.

The Wispy Volume Lashes offer a perfect balance of fluffiness, volume, and lightweight comfort, creating a soft, feathery, and naturally voluminous lash effect.



### 2tips Style Description



**Key Features:**

1. Dual-Split Tip Design – Each lash has two fine tips at the end, creating a fluffy and natural effect.
2. Soft & Feathery Look – Mimics the natural lash growth pattern for a light and airy appearance.
7. Versatile & Customizable – Suitable for different eye shapes and styles, from natural to soft glam.
8. Long-Lasting & Comfortable – Holds its shape well while remaining lightweight and easy to wear all day.

The 2 Tips Lashes style offers a soft, dimensional, and natural volume, perfect for those who love a feathery, elegant lash look.



### 3D Volume Style Description



**3D Volume Style Description**

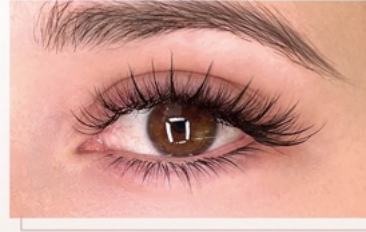
**Key Features:**

1. Handmade 3D Fan Technique – Each fan consists of ultra-fine lash fibers, enhancing volume while maintaining a natural look.
2. Lightweight & Fluffy – Uses finer fibers, ensuring density without heaviness.
3. Balanced Volume – Provides density without looking overly dramatic, making it suitable for both daily wear and special occasions.
4. Comfortable & Long-Lasting – Designed for all-day wear, ensuring a stable and natural lash effect.

The 3D Volume Lashes offer a perfect balance of fullness, lightness, and dimension, creating a soft yet voluminous lash effect that enhances the eyes effortlessly.



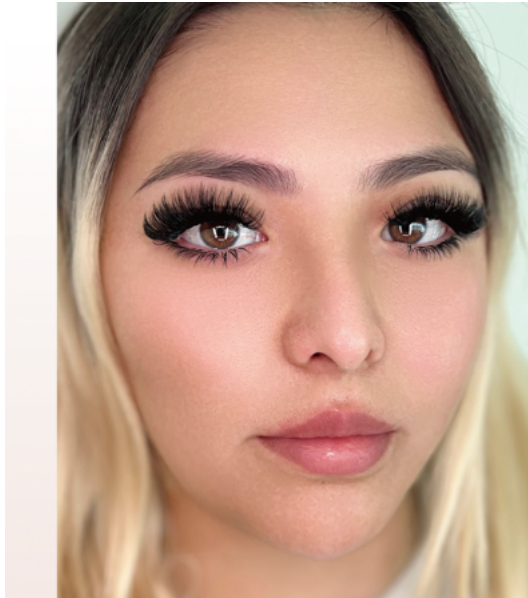
### Sunflower Style Design Description



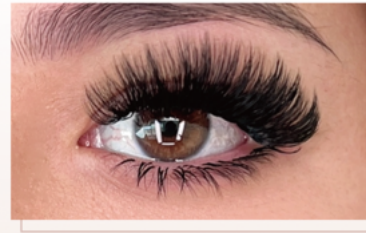
**Key Features:**

1. Bright and Open-Eye Effect – Designed to create a fresh, radiant, and wide-eyed look, inspired by sunflower petals.
2. Wispy and Layered Design – A mix of longer and shorter lashes to mimic the soft, natural spread of sunflower petals.
3. Fluffy and Voluminous – Features a light yet full-bodied appearance for a balanced, lively lash look.
4. Textured and Spiked Accents – Alternating lengths to create a delicate yet defined lash pattern.
5. Natural Curvature – Soft, Sultry C or D curl to enhance the eyes without looking too heavy.
6. Lightweight and Comfortable – Uses ultra-fine lash fibers for a soft and feathery feel.
7. Versatile for All Eye Shapes – Customizable to enhance different eye structures, making the eyes look bigger and brighter.
8. Fresh and Feminine Appeal – Perfect for those seeking a natural yet eye-catching lash style.

The Sunflower Style Lashes offer a soft, radiant, and effortlessly beautiful look, ideal for those who love a natural yet voluminous lash effect.



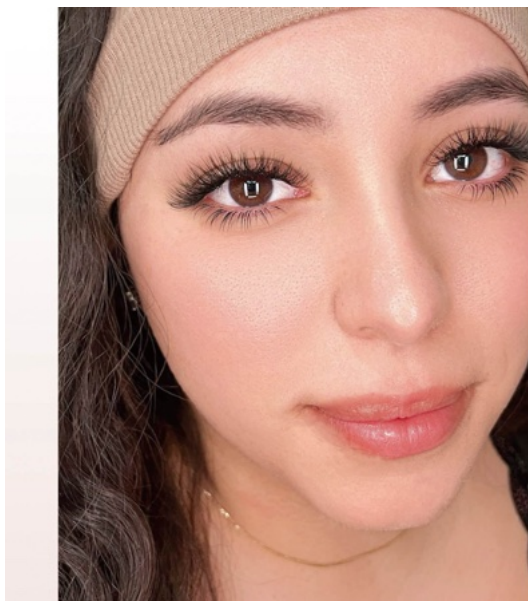
### Mega Volume Style Description



**Key Features:**

1. Handcrafted Large Fan Design – Each fan is meticulously handmade using multiple ultra-fine fibers for a dense, voluminous effect.
2. Ultra-Dense Volume – Lashes are tightly packed for maximum fullness and a bold, dramatic appearance.
3. Uniform Length & Structured Look – No mixed lengths; all lashes are the same length, creating a polished and symmetrical lash style.
4. Precision Application – Each fan is evenly attached to the natural lash, ensuring a stable and long-lasting effect.
5. Ultra-Lightweight Fibers – Despite the high volume, the 0.03mm or 0.05mm fibers ensure a comfortable, lightweight feel.
6. Long-Lasting & Secure Hold – Designed for durability and long wear (maintaining its full, dramatic shape over time).
7. High-Impact Aesthetic – Ideal for clients who want bold, statement lashes that enhance individuality and charisma.
8. Perfect for Special Occasions – Best suited for parties, weddings, stage performances, and glamorous events.

The Mega Lash Style offers unparalleled volume, structure, and drama, making it the perfect choice for those who want maximum impact and standout beauty.



### YY Overlapping Style Description



**Key Features:**

1. Unique Overlapping Effect – YY-shaped fibers are layered to create a full yet natural look.
2. YY-Shaped Fiber Design – Each lash splits into two fine tips, enhancing volume and density.
3. Staggered Placement – Lashes are applied at alternating angles to create a soft, multidimensional effect.
4. Precision Application – Each lash is expertly placed for a seamless, balanced finish.
5. Versatile & Long-Lasting – Suitable for daily wear or elegant, natural styles with lasting comfort.

The YY Overlap Lashes offer a perfect blend of volume, softness, and natural movement, enhancing the eyes with a refined and multidimensional lash look.